



# recent publications

**Child care quality and children's**

**engagement.** Raspa, M.J., McWilliam, R.A., & Ridley, S.M. (2001). *Early Education and Development*, 12, 209-224.

**Discerning the dialogical self:**

**A theoretical and methodological examination of a Nepali adolescent's narrative.** Skinner, D., & Valsiner, J. (2001). *Forum: Qualitative Social Research*, 2(3). Available at: <<http://www.qualitative-research.net/fqs-texte/3-01/3-01skinneretal-e.htm>>.

**Early interventionists' perspectives on professional comfort as consultants.**

Wesley, P.W., Buysse, V., & Skinner, D. (2001). *Journal of Early Intervention*, 24(2), 112-128.

**Evaluating parent involvement and family support in early intervention and preschool programs: Three levels of accountability.**

Bailey, D.B., (2001). *Journal of Early Intervention*, 24, 1-14.

**FMRP and early development in fragile X syndrome.**

Bailey, D.B., Hatton, D.D., Tassone, F., Skinner, M., & Taylor, A.K. (2001). *American Journal on Mental Retardation*, 106, 16-27.

**Fragile X syndrome and autism.**

Hatton, D.D., & Bailey, D.B. (2001). In L. Marcus, E. Schopler, C. Shulman, & N. Yirmiya (Eds.), *The research basis of autism intervention outcome*, (pp. 75-89). New York: Kluwer Academic/Plenum Publishers.

**Identifying infants and toddlers with fragile X syndrome: Issues and recommendations.**

Bailey, D.B., Roberts, J.E., Mirrett, P., & Hatton, D.D. (2001). *Infants and Young Children*, 14(1), 24-33.

**Implementing early intervention policy: Are we making the grade?**

Harbin, G.L. (2001). *Journal of Early Intervention*, 24(2), 103-105.

**Model registry of early childhood visual impairment: First year results.**

Hatton, D.D., & Model Registry of Early Childhood Visual Impairment Collaborative Group. (2001). *Journal of Visual Impairment and Blindness*, 95(7), 418-433.

**Models of acculturation and health behavior among Latino immigrants to the U.S.**

Arcia, E., Skinner, M., Bailey, D., & Correa, V. (2001). *Social Science and Medicine*, 53, 41-53.

**North Carolina Preschool Services for Children with Disabilities: A Profile of Local Education Agency Programs and Practices.**

Mengel, P., Payne, B., Trohanis, P., & Baars, K. (2001). Chapel Hill: The University of North Carolina, FPG Child Development Institute, National Early Childhood Technical Assistance System.

**Parent Leadership Development: Building Strong Voices for Children (Facilitator Guide).**

Parent Leadership Development Project. (2002). Chapel Hill: The University of North Carolina, FPG Child Development Institute.

**Parent Leadership Development: Building Strong Voices for Children (Participant Notebook).** Parent Leadership Development Project. (2002). Chapel Hill: The University of North Carolina, FPG Child Development Institute.

**Putting the child back into child care quality assessment.** Ridley, S.M., & McWilliam, R.A. (2001). *Young Children*, 56(4), 92-93.

**Removing Barriers to Health Clubs and Fitness Facilities.** North Carolina Office on Disability and Health. (2001). Chapel Hill: The University of North Carolina, FPG Child Development Institute.

**Resource Guide: Selected Early Childhood/Early Intervention Training Materials (10th ed.).** Catlett, C., & Winton, P.J. (2001). Chapel Hill: The University of North Carolina, FPG Child Development Center.

**Resources within reason: Supporting inclusive programs and practices within communities.** Catlett, C., Winton, P., & Dennis, B. (2001). *Young Exceptional Children*, 4(4), 27.

**Resources within reason: Resources that increase awareness about inclusion in diverse environments.** Catlett, C., & Winton, P.J. (2001). *Young Exceptional Children*, 4(2), 29.

**Section 619 Profile (10th ed.).** deFosset, S. (Ed.). (2001). Chapel Hill: The University of North Carolina, FPG Child Development Institute, National Early Childhood Technical Assistance System.

**Seizures in infants and young children: An exploratory study of family experiences and needs for information and support.** Aytch, L.S., Hammond, R., & White, C. (2001). *Journal of Neuroscience Nursing*, 33(5), 278-285.

**Smooth Moves to Kindergarten.** Wesley, P.W. (2001). Chapel Hill, NC: Chapel Hill Training Outreach Press.

**The evolution of transition policy for young children with special needs and their families: Past, present, and future.** Rosenkoetter, S.E., Whaley, K.T., Hains, A.H., & Pierce, L. (2001). *Topics in Early Childhood Special Education*, 21(1), 3-15.

**The role of religion in the lives of Latino families of young children with developmental delays.** Skinner, D., Correa, V., Skinner, M., & Bailey, D. (2001). *American Journal on Mental Retardation*, 106, 297-313.

**Toward a definition of quality inclusion: Perspectives of parents and practitioners.** Buysse, V., Skinner, D., & Grant, S. (2001). *Journal of Early Intervention*, 24(2), 146-161.

**Walking the Walk: A Guide to Diversity Resources for Trainers.** Catlett, C., Winton, P.J., Parrish, R.N., & White, C. (2001). Chapel Hill: The University of North Carolina, FPG Child Development Center.



Aytch



Bailey



Buysse



Catlett



deFosset



Dennis



Gallagher



Hatton



Harbin



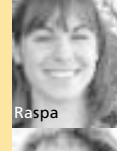
McWilliam



Mirrett



Parrish



Raspa



Ridley



Roberts



Skinner



Trohanis



Wesley



Whaley



Winton