

Trends in the 2008 Child Outcomes data

June 5, 2008

Conference Call

Dial in at 866-682-6100



Early Childhood Outcomes Center





Purposes of this call

- To help states look at their child outcome data from the perspective of data quality
- To pique interest in the August “Measuring Child and Family Outcomes” Conference



State Approaches to Measuring Child Outcomes

Approach	Part C (56 states)	Preschool (59 states)
One tool statewide	8/56 (14%)	13/59 (22%)
Multiple Publishers' online tools	2/56 (4%)	3/59 (5%)
COSF 7 pt. scale	40/56 (71%)	36/59 (61%)
Other	6/56 (11%)	7/59 (12%)

*Preliminary Data. Includes states 'switching to' an approach.

Number of Children Included in February 2008 SPP/APR Data

Part C (52)

Range: 1-5944

<30 = 19

30-99 = 15

100-499 = 11

500-999 = 4

1000+ = 3

Preschool (53)

Range: 1-4249

<30 = 7

30-99 = 13

100-499 = 14

500-999 = 8

1000+ = 11

Preliminary data from ECO review of February 2008 APRs/SPPs

Early Childhood Outcomes Center



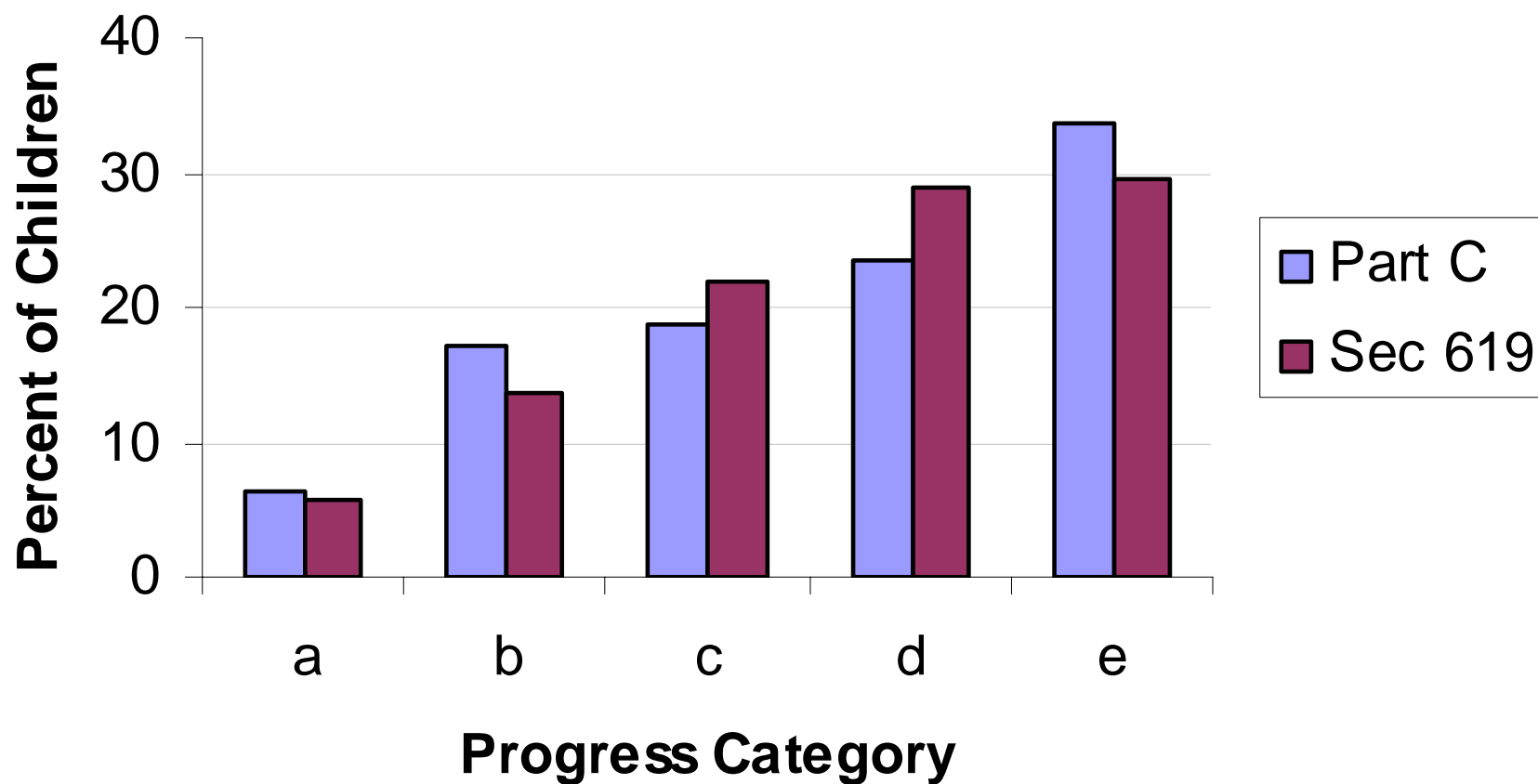
OSEP Child Outcome Reporting Categories

Percentage of children who:

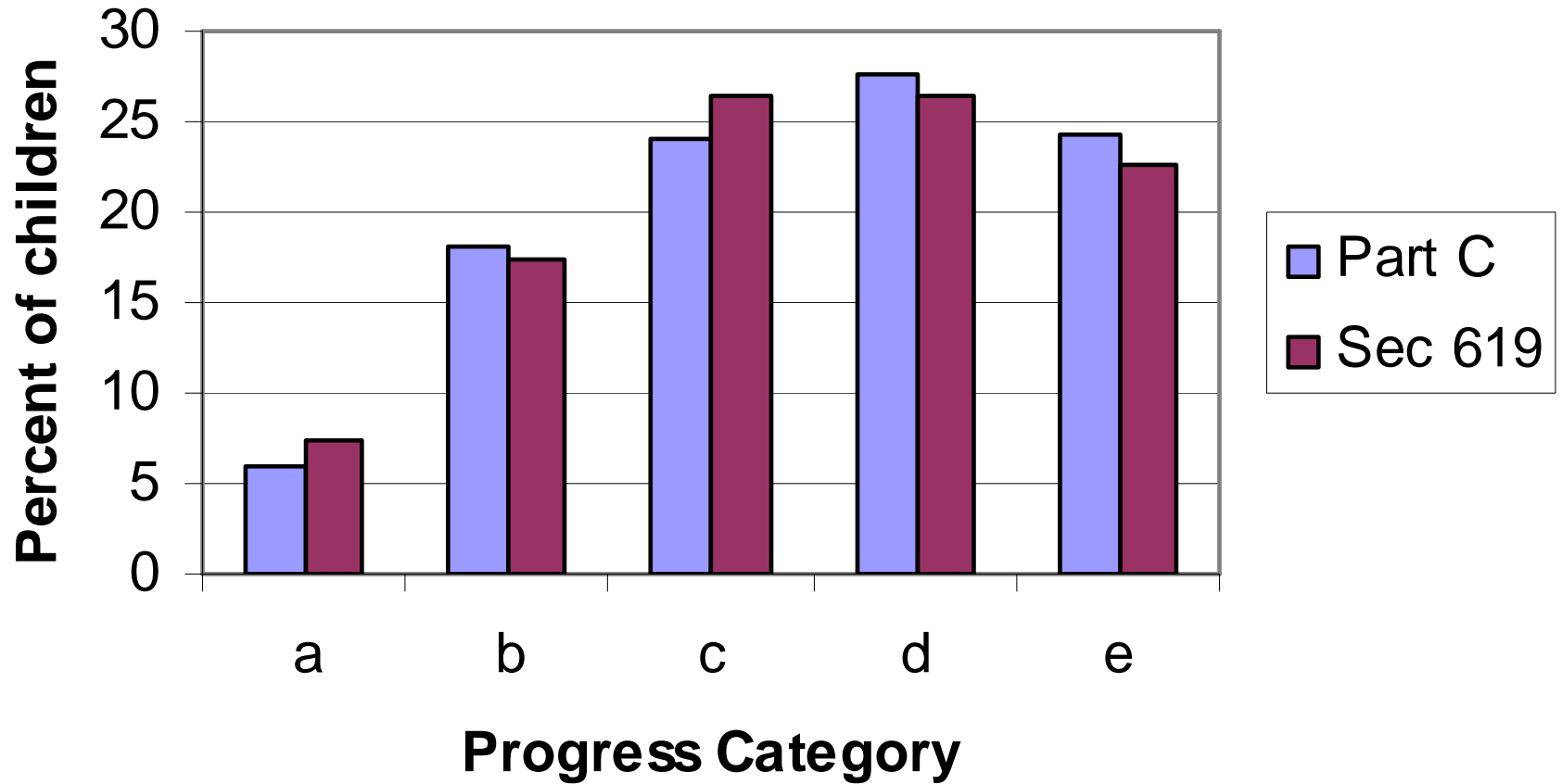
- a. Did not improve functioning
- b. Improved functioning, but not sufficient to move nearer to functioning comparable to same-aged peers
- c. Improved functioning to a level nearer to same-aged peers but did not reach it
- d. Improved functioning to reach a level comparable to same-aged peers
- e. Maintained functioning at a level comparable to same-aged peers



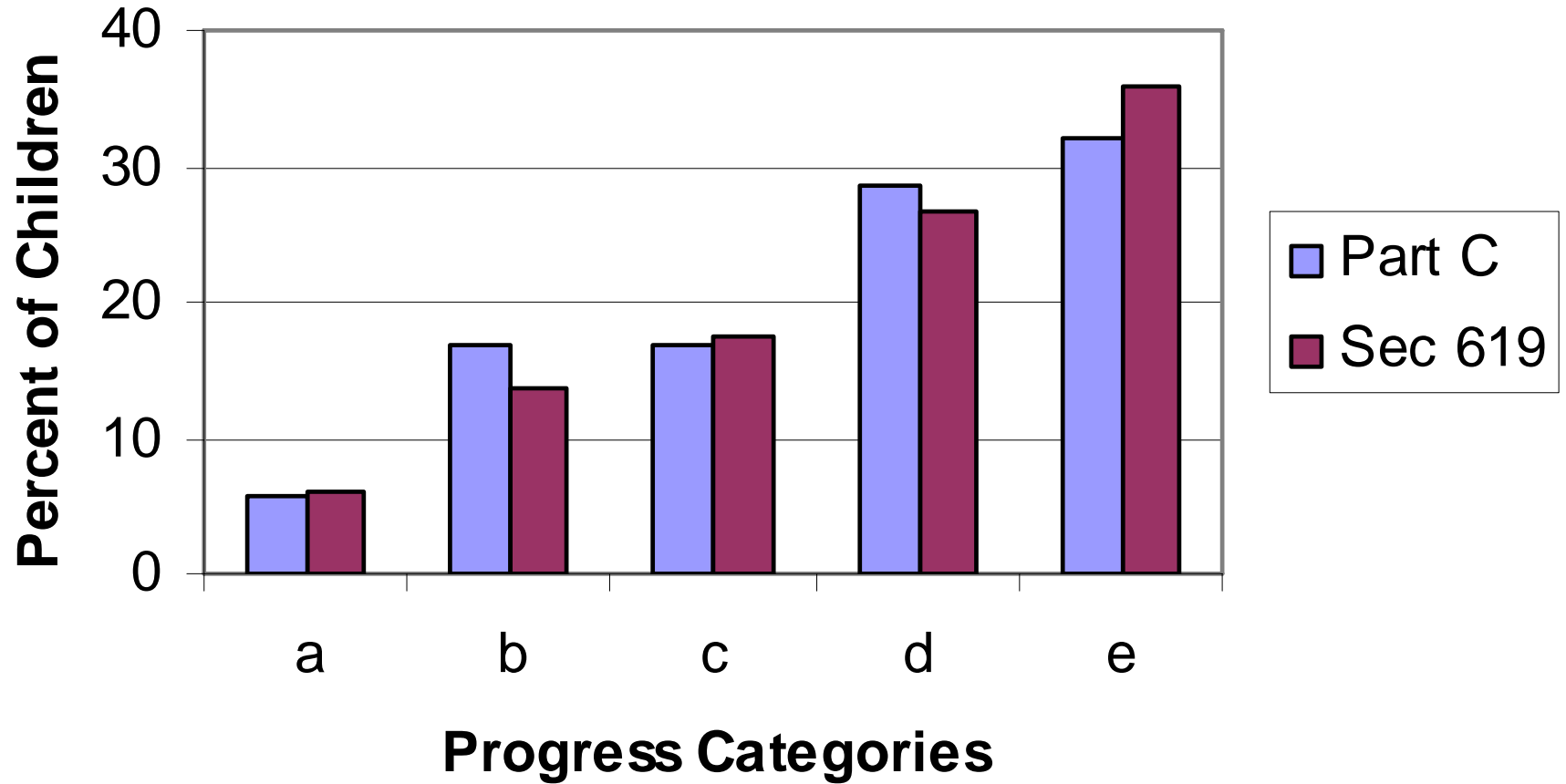
Draft "Trends" for Outcome 1



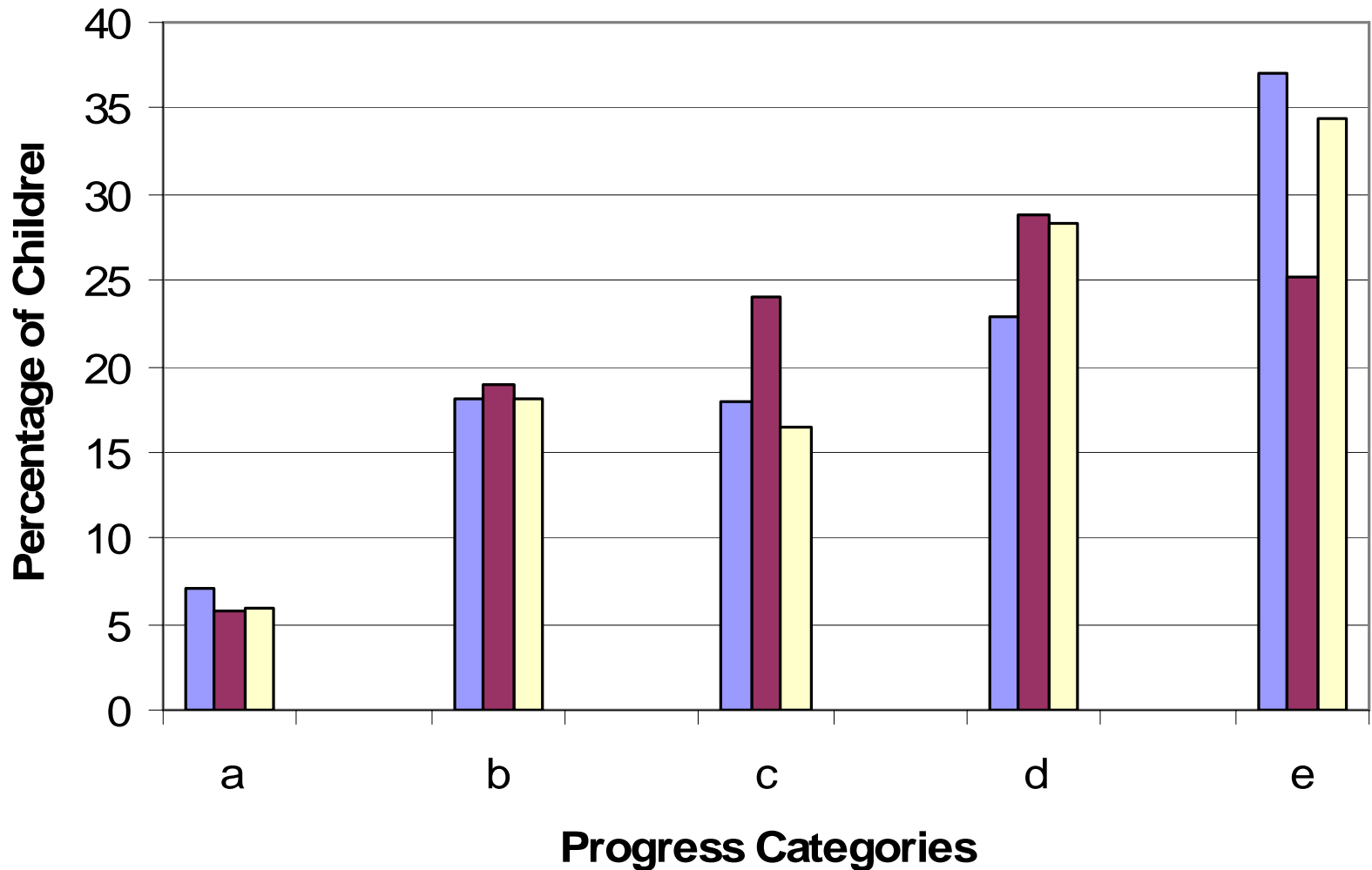
Draft Trends for Outcome 2



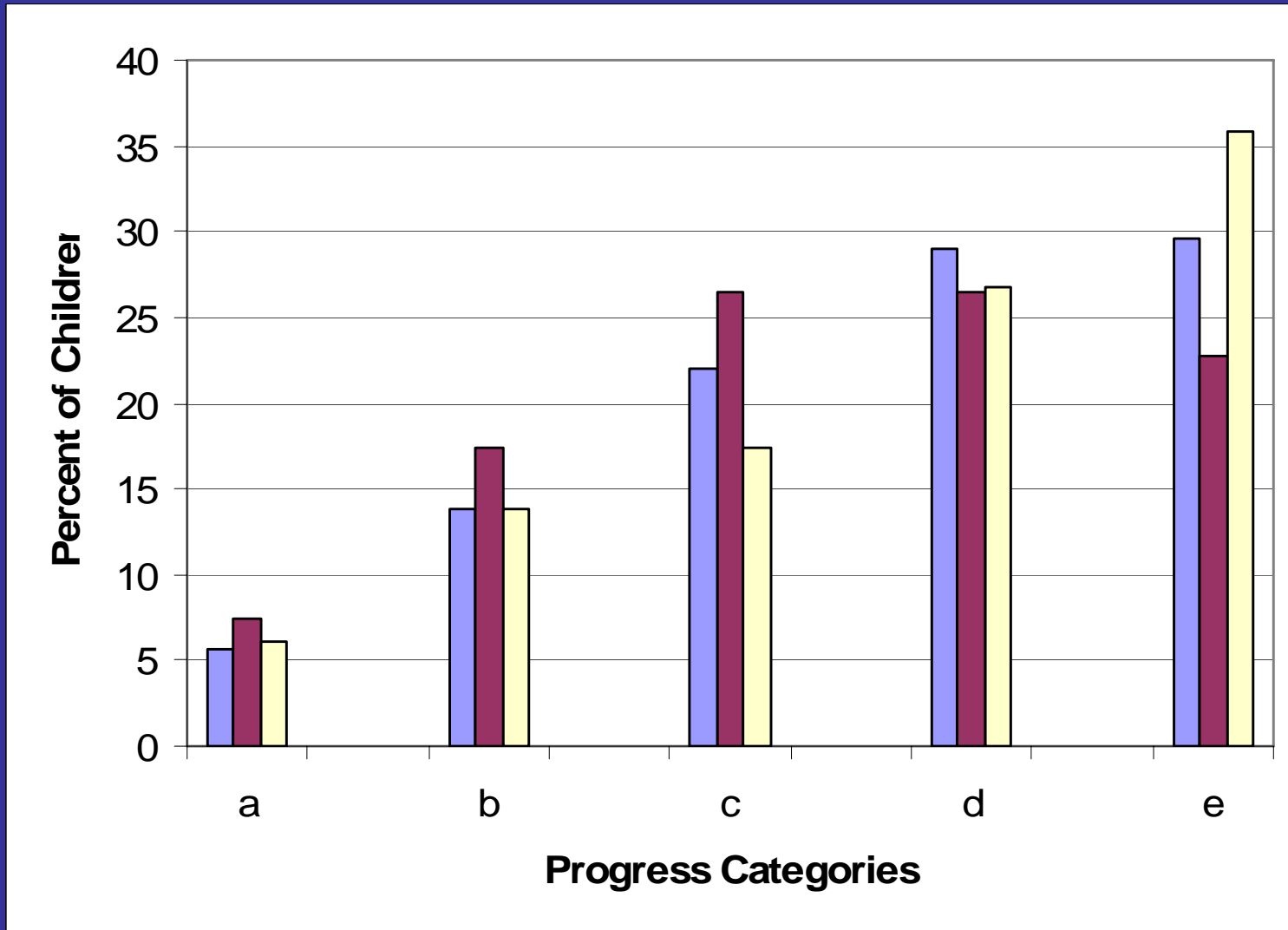
Draft Trends for Outcome 3



Part C- Trends across the 3 Outcomes (52 out of 56 states Reporting)



Preschool – Trends across the 3 Outcomes (53 out of 60 States)



Preliminary data from ECO review of February 2008 APRs/SPPs

Caution – Interpreting this Year's Data

- Only represents children who have entered and exited since outcome system put in place in states
 - In a typical state, data may represent children who participated in the program for 6 to 12 months
- The quality of data collection usually increases over time as guidance gets clearer and practice improves the implementation



Scanning Your Data for Unusual Patterns

- First, focus on progress categories “a” and “e”
 - Should reflect the characteristics of the children served in the state (related to eligibility definition in Part C)
 - Should be fairly stable over time (when data are high quality and representative)





Checking Category “a”

- Percents too high?
 - Should represent children with very significant delays or degenerative conditions (any improvement in functioning puts a child into “b”)
- Why it may be too high
 - Decision rules based on different interpretation of “no progress”
 - Tools without enough discrimination to show small amounts of progress





Checking Category “e”

- Percents too high or low?
 - Should represent children functioning at age expectations at **entry and exit** in each outcome area
 - Do your patterns make sense for each outcome based on the children served in the state?
- Why it may be too high or low
 - Decision rules based on different interpretation of “age expectations”





Data Sharing Communities

- COSF data
- Publishers' on-line analysis
- One tool statewide
- If you are interested in joining or learning more about them, let ECO know at [<staff@the-eco-center.org>](mailto:staff@the-eco-center.org)





August Conference

- Registration is open for the Measuring Child and Family Outcomes Conference, August 27-28, 2008, in Baltimore, MD
- Have something to present? Let us know at <staff@the-eco-center.org>
- Links to registration on both NECTAC and ECO web sites
 - www.nectac.org
 - www.the-eco-center.org